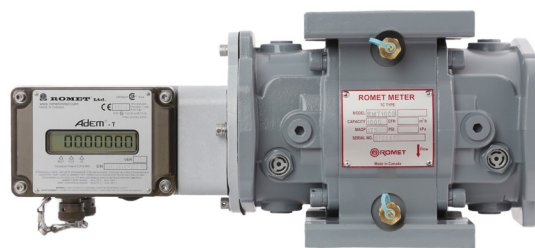
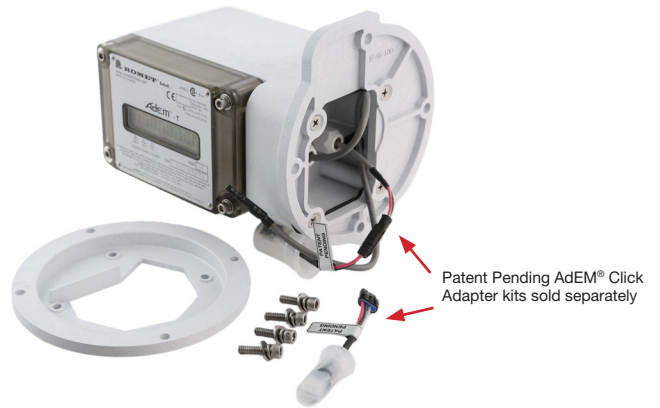


# Romet AdEM®-T Module

## One Size Fits All With The AdEM® Click

Romet Limited is pleased to offer our next generation of direct mount temperature compensating electronic modules for both Romet and Dresser rotary gas meters. The AdEM®-T has a compact, rugged, service-free, tamperproof and weather resistant design with a high level of accuracy and customization. With a nominal battery life of 20 years, the AdEM-T makes an ideal replacement for mechanical TC indexes.



Romet RMT Meter with AdEM-T and patented independent backup index

Romet has developed a single adapter plate that will allow our AdEM-T to be installed on Romet RM 600-56000 rotary meters and RMT 600-23000 rotary meters. We also offer a single adapter plate for Dresser B3 meters ranging from 8C to 56000 and LMMA meters ranging from 1500-16000. The AdEM-T comes standard with Romet's patented AdEM Click technology allowing for seamless installation between Romet and Dresser rotary meters.



# ROMET

Measuring energy globally

# Upgrade Your Rotary Meters With The Latest Electronics In A Matter Of A Click



With the AdEM Click you can carry one electronic corrector to fit all sizes and brands of rotary meters in your system.

- Simple
- Reduced inventory
- Reduced truck rolls



Romet offers a full line of mounting brackets for the installation of an AMI-AMR device of your choice. Our custom solutions can be easily field installed or mounted and programmed at our factory to reduce installation costs and improve reliability.

## Specifications

- 20 year nominal battery life
- Battery life indicated in months or percentages
- End of battery life warning
- Long lasting lithium battery
- Non-volatile EEPROM memory with full audit trail
- Up to 100 days of hourly readings
- 672 daily logs
- 102 alarm logs stamped with time and date
- 200 event logs
- Live temperature compensation
- Fixed pressure factor (customizable)
- Total accuracy of +/-0.3% nominal
- Expands meter rangeability to 200:1
- Standard ambient and gas temperature: -40F to 158F (-40C to 70C)
- Four output pulses available:
  - Two isolated volume pulse output channels (corrected and uncorrected)
  - One isolated pulse output for alarm or volume (corrected or uncorrected)
  - Additional isolated corrected pulse output channel for AMR/AMI devices
- Customizable pulse width and pulse spacing
- Serial communication port- RS232 or RS485
- Analog and cellular modem compatible
- Optional portable keyboard
- Highly sensitive semiconductor temperature sensor
- Fixed/configurable parameters with multiple levels of security
- Standard with patented AdEM Click technology
- Compatible with Itron, Sensus, Aclara, and other AMI/AMR devices
- Convenient one touch push button proving mode
- Quick and efficient proving with a Model 5 prover
- Rugged single scroll button with up to 15 display parameters
- Large, easy to read LCD 8 digits, 14 segment semi alpha-numeric
- UV resistant engineered polycarbonate enclosure
- Electronics sealed in silicon potting material for improved reliability and product life
- Weather resistant
- Adapter plates for Dresser LMMA & B3 meters
- Nominal 12 year calibration
  - 3 points temperature calibration

### AdEM-T Approvals/Certifications

- Intrinsically safe class I division 1 & 2 group D
- CSA Approval 2277666
- ATEX Approval FTZU 08 ATEX Q 004 & FTZU 05 ATEX 0274X
- Measurement Canada Approval AG-0593
- MID Approval SK 17-QD-SMU-017 & SK 13-MI002-SMU005
- New York State approved
- Third party qualification testing – Gas Technology Institute
- CE Declaration of Conformity

Contact us today for more details!



# ROMET

Measuring energy globally

Canada 905-624-1591 USA 1-800-387-3201  
www.rometlimited.com • romet@rometlimited.com

The values quoted are typical of normal production. They do not constitute a specification. Romet Limited reserves the right to change any information in this literature without notice. All of the information and data in this literature has

been carefully compiled and thoroughly checked. However, Romet Limited will not assume responsibility for any possible omissions or errors. Romet is a registered trademark.